



Prodex REFLECTIVE PIPE INSULATION LAYER

Polyethylene closed-cell foam with reinforced aluminum lining

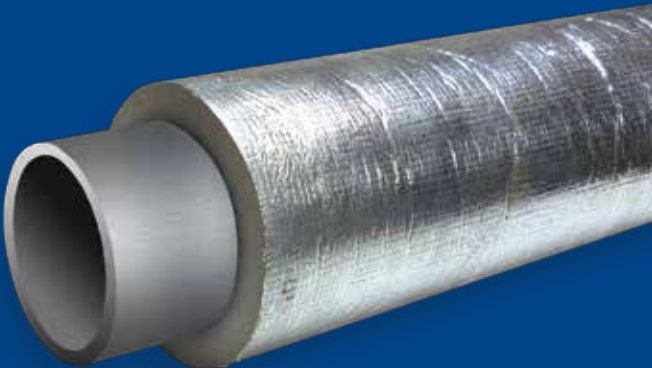
MAXIMUM EFFICIENCY FOR OUTSTANDING PERFORMANCE

ADVANTAGES

- Low thermal conductivity and reflective surface for a better thermal insulation.
- Superficial aluminum layer to increase the thermal insulation value by rejecting the radiant heat.
- A weatherproof lining that allows placing the material outdoors with no need for extra treatment

MAIN VALUE ADDED

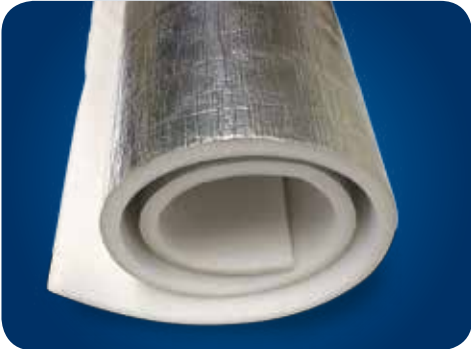
- Total insulation
- Waterproof
- Low water vapor transmission
- UV-rays resistant
- Very flexible product
- Easy to install



MEASUREMENT AND THICKNESS

**Measurement:** 0.60 m wide x 1.22 m long sheet | **Thickness:** from 15 m to 50 m

The 15 m thick sheet does not have grooves.



PIPE INSULATION (FOAMY INSULATION LAMINATED WITH ALUMINUM AND POLYETHYLENE NET)		
MEASUREMENTS AND TOLERANCE OF STANDARD PRODUCT		
THICKNESS: 15, 20, 25, 35, and 50 m ± 7% See tolerance below	LENGTH: 1.22 ± 1.5 cm	WIDTH: 0.60 m ± 1.0 cm
TECHNICAL PRODUCT SPECIFICATIONS		
FEATURES	VALUE	STANDARD
FOAM CELL STRUCTURE	Closed	-
FOAM DENSITY	25 kg/m³ - 30 kg/m³	-
WATER PERMEABILITY	Waterproof	Dir.UEAtc
WATER STEAM PERMEABILITY	0.019 g/m²hkPa - 0.09 perms (gr/ft²*h*in.hg)	ASTM E 96
FLAME INDEX	0	ASTM E-84-99
SMOKE DEVELOPMENT	15	ASTM E-84-99
EMITTANCE	0.03	ASTM C-1371-98
FUNGI RESISTANCE	Resistant /Does not encourage fungi – mold growth	ASTM C 1338
CORROSION RESISTANT	COMPLIANT	ASTM C-1224
CRACK RESISTANT	COMPLIANT	ASTM C-1224
DELAMINATION RESISTANT	COMPLIANT	ASTM C-1224
MOISTURE RESISTANT	COMPLIANT	ASTM C-1258
OPERATING TEMPERATURE	- 20°C / 80°C	ASTM C-1224
THERMAL CONDUCTIVITY	0.25 btu.in/ft2 h °F - 0.036 W/mK	ASTM C-518

**Notes:**  
25 m - 35 m thickness with 10 m wide x 13 m deep grooves, each 1 1/2" distance across the length of the sheet for flexibility purposes.  
50 m thickness with 18 m wide x 25 m deep grooves, each 1 1/2" distance across the length of the sheet for flexibility purposes.  
The 15 m thick sheet does not have grooves.

Phone (506) 2438-2322  
Fax (506) 2438-2341  
www.prodexcr.com



Business Alliance for Secure Commerce

