

AD10

TECHNICAL DATA SHEET REFLECTIVE THERMAL INSULATION PRODEX

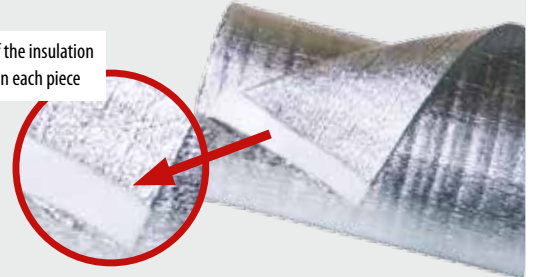
ALUMINUM FOIL + POLYETHYLENE FOAM + ALUMINUM FOIL

0.4" closed cell polyethylene foam sandwiched between pure aluminum on both sides.



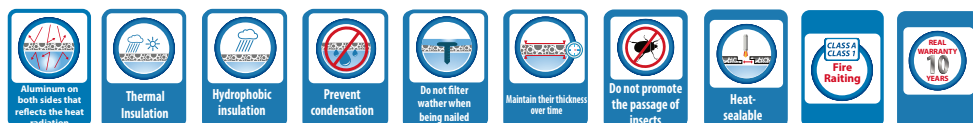
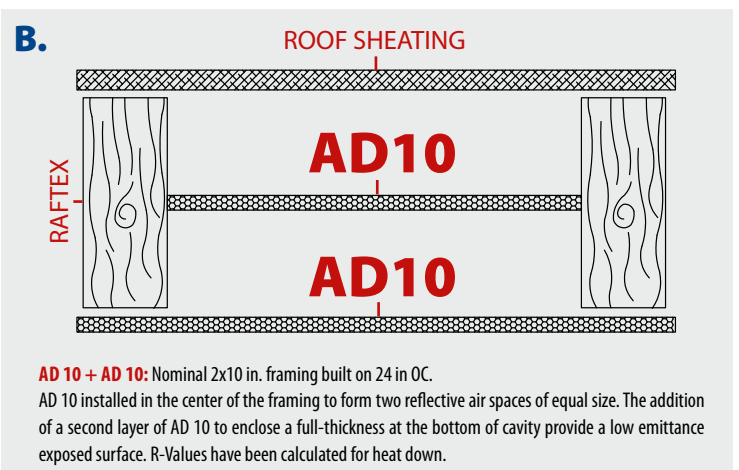
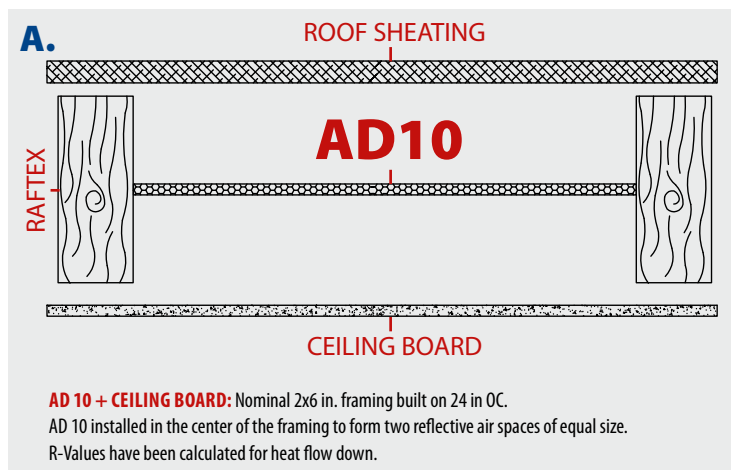
Reflective thermal insulation developed according to the highest standards of quality, designed to save energy eliminating the radiant heat emitted by roofs, floors, and walls within the constructions. Besides, it protects your home, business or project providing COMFORT at any time of year.

→ With a 2" grade of 0.19" thick space in the edge of the insulation roll to facilitate and improve the overlap between each piece



AD 10 INSULATION (ALUMINUM FOIL + POLYETHYLENE FOAM + ALUMINUM FOIL)		
DIMENSIONS AND TOLERANCES OF THE STANDARD PRODUCT		
THICKNESS: 0.4 ± 0.027 (in)	LENGTH: ± 11 (in)	WIDTH: 4 ± 0.032 (ft)
TECHNICAL CHARACTERISTICS OF THE PRODUCT		
CHARACTERISTICS	VALUE	STANDARD
FOAM CELL STRUCTURE	CLOSED	-
EFFECTIVE WIDTH	4 ft	-
AVERAGE WEIGHT OF ft ²	0,085 lb/ft ²	-
WATER RESISTANCE	WATERPROOF	Dir. UEAtc
WATER VAPOR TRANSMISSION	0.05 perms (gr/ft ² *h*in.hg)	ASTM E 96/IRAM 1735
FLAME INDEX	0	ASTM E-84-99
SMOKE DEVELOPMENT	15	ASTM E-84-99
EMITANCE	0.03	ASTM C-1371-98
FUNGAL RESISTANCE	NO GROWTH	ASTM C 1338
CORROSIVENESS	PASS	ASTM C-1224
PLIABILITY	NO CRACKING	ASTM C-1224
HUMIDITY RESISTANCE	PASS	ASTM C-1224
BLEEDING AND DELAMINATION	NO BLEEDING / NO DELAMINATION	ASTM C-1258
TENSILE STRENGTH AT BREAK (MD)	13.6 Lbf/inch	ASTM D -638
OPERATING TEMPERATURE	-4 °f / 176 °f	ASTM C-1224
R VALUE (Heat Flow Down)	*A: 16; B: 28.7 (ft ² *h*°F/Btu)	ASTM C-236

→ It is recommended a distance of 2.20 meters to 3.50 meters between supports. | → Do not install at soffits when the insulation can be permanently exposed to UV radiation.



PRODEX, A MANAGEMENT SYSTEM CERTIFIED COMPANY

Certification number for:
Costa Rica: RE-005/03/2004, SGA-003/01/2009 y CRIS:JO00064-1-10
Panama: RE-005/03/2004

Phone: (506) 2438-2322
Fax: (506) 2438-2341



ProdexCostaRica www.prodexcr.com

PRODEX
LEADERS IN THERMAL INSULATION FOR CONSTRUCTION